



**MISTORIA**  
ESTATE AGENTS



## 19 Seddon Street Manchester

**£540 Per Week**

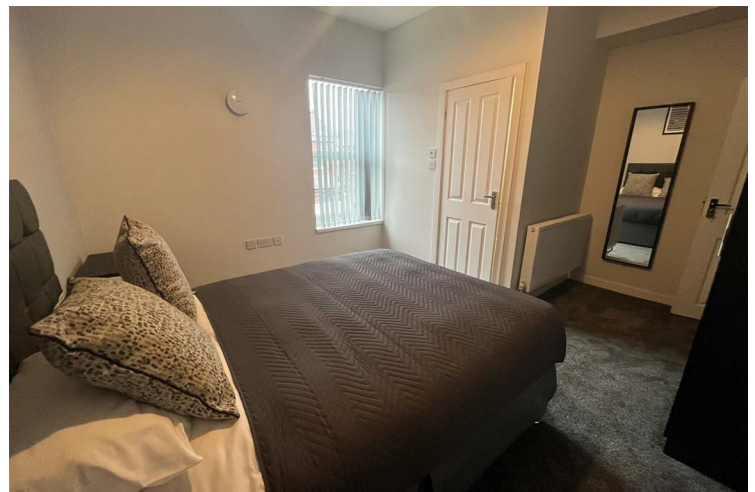
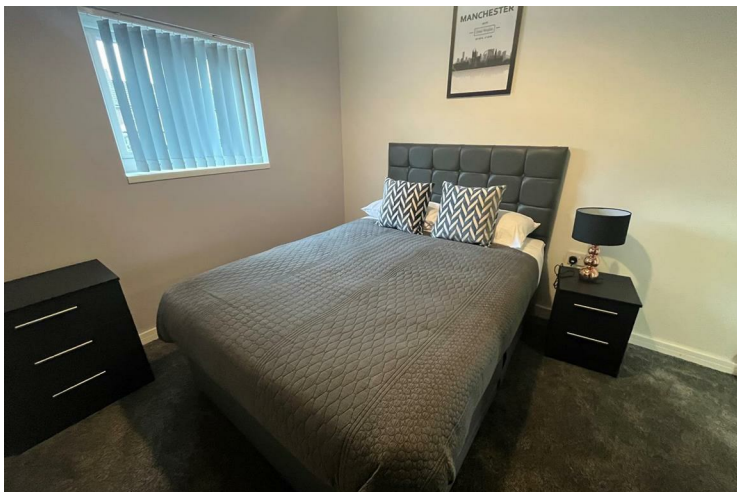
### **\*\* ONE ROOM AVAILABLE \*\***

Welcome to this modern semi-detached house share located on Seddon Street in the vibrant area of Little Hulton. This property offers a fantastic opportunity for those seeking comfortable and convenient living arrangements. The house features four well-appointed bedrooms, each designed to provide a peaceful retreat.

With four bathrooms, including en-suite facilities, residents will enjoy the luxury of ample personal space and privacy. The modern design and layout ensure that the home is both functional and stylish, catering to the needs of contemporary living. Gas central heating throughout the property guarantees warmth and comfort during the colder months, making it an ideal choice for year-round living.

Additionally, the inclusion of bills in the rental price simplifies budgeting, allowing you to focus on enjoying your new home without the hassle of managing multiple expenses.

As a House in Multiple Occupation (HMO), this property is well-suited for professionals or students looking for a shared living experience in a friendly environment. Little Hulton offers a range of local



- 50% OFF THE FIRST MONTHS RENT! DONT MISS OUT • ROOM ONLY • SHARED KITCHEN • ENSUITES • LIVING ROOM • HMO

### Full Description

Fully refurbished to an extremely high standard! This modern contemporary design offers everything you need. There are 4 spacious double bedrooms, each with a double bed, wardrobe and cabinet included. there is a cosy lounge dining area complete with flat screen TV and broadband included in the price! The kitchen comes complete with white goods, oven and hob, washer/dryer. Also kettle, toaster, microwave, iron and Hoover.

Additionally this property has easy access to local transport and motorway links which gives you easy access to Manchester City Centre.

Rent £600 P.C.M.

Deposit £600

Holding Deposit £150 to secure the room

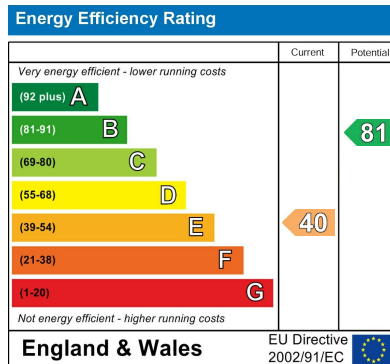
### Disclaimer

Disclaimer: The information and images provided in this property advertisement are intended for guidance purposes only. While we make every effort to ensure the accuracy of the details, we strongly recommend that interested parties view the property in person to confirm the property's condition and suitability for their specific requirements. The photographs used in this advertisement may have been digitally enhanced and may not accurately represent the current condition of the property. Any measurements or distances provided are approximate and should not be relied upon for any purpose. Furthermore, the description and details provided are based on the landlord's

understanding and may be subject to change without notice. Prospective tenants are advised to verify any specific details that are important to them before entering into any agreement. We do not accept any liability for any loss or damage, whether direct or indirect, arising from reliance upon the information provided in this advertisement. We strongly advise all parties to seek professional advice and conduct their own due diligence before making any decisions or commitments related to this property. By viewing this advertisement, you agree to the above disclaimer and acknowledge that any reliance on the information provided is at your own risk. Please note that this disclaimer is subject to change and may be updated without prior notice







Agents Note: Whilst every care has been taken to prepare these particulars, they are for guidance purposes only. All measurements are approximate and are for general guidance purposes only and whilst every care has been taken to ensure their accuracy, they should not be relied upon and potential buyers/tenants are advised to recheck the measurements

Worsley Mistoria  
31 Memorial Road  
Walkden, Worsley  
Manchester  
M28 3AG

0161 790 3999  
info@mistoria.co.uk  
mistoria.co.uk

